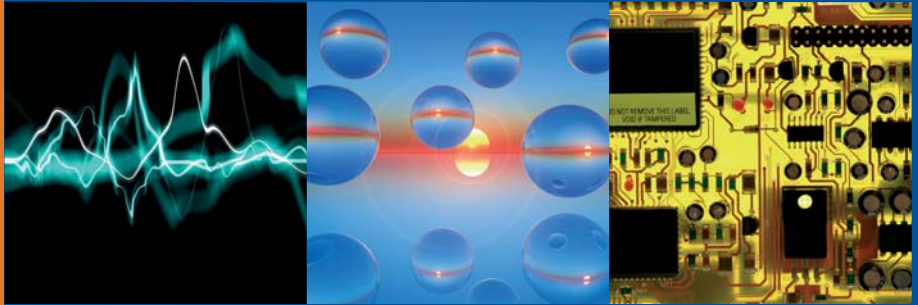
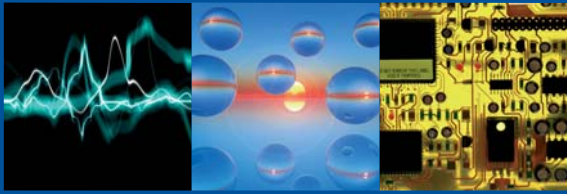




# UHS

Halt & Hass Chambers





## Why accelerated testing?

Accelerated testing is used to quickly detect any inherent design and manufacturing flaws. The environments are meant to give high levels of stress to precipitate failures in less time than in standard testing. Once the failures have been detected, corrective decisions can be made. This process adds to product robustness. The main element of the testing process is the HALT test. Typically, a series of individual and combined stresses such as multi-axis vibration, rapid temperature cycling and product power cycling are applied in steps of increasing intensity (well beyond those expected in the field). Test time is compressed with the accelerated stressing, leading to earlier product maturity.

### WHAT IS HALT?

HALT - Highly Accelerated Life Testing

This is the process by which a product is tested, usually in its design or prototype stage, using temperature, vibration, and the combination of environments to test until the point of failure, typically using step stress methods. If the failure is unexpected, or below the limits deemed acceptable for its useful lifetime, then corrective action is taken and the testing continued.

### WHAT CAN HALT DO?

The Accelerated Life Test can show you, often in just a matter of hours, how a particular product will stand up to years of operational life.

### HOW?

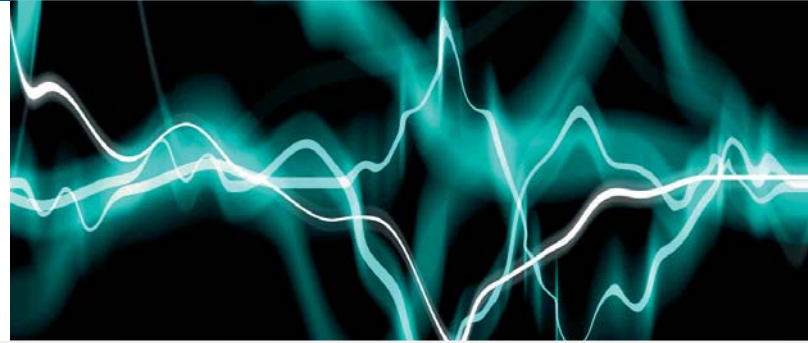
By using the ACS UHS System you can submit your product to extremes of environmental stress. You can perform various accelerated stress tests like HALT, HASS, Step Stress Testing and others. Each type of stress identifies specific defects that may be missed by traditional testing methods and equipment.

### WHY?

When these defects are speedily identified in the product development stage, it helps to reduce development time and produces higher quality product. Shorter development time means shorter time to market, something that can make a huge difference in sales. Higher reliability during the operational life-span reduces warranty costs and general in-the-field repair costs. It also brings about customer satisfaction, something that is invaluable in a tough economic climate.



# UHS - Ultra High Stress Chambers



ACS UHS chambers are designed specifically to perform accelerated tests by applying extreme environmental stress. These stresses include:

- Tri-axial vibration imparting 6 Degree of Freedom vibration to the product
- Rapid thermal cycling
- Optional Humidity

In order to accomplish this, the chambers have the following features:

- 3 accelerometers for measurement, one for each of the X, Y and Z axes
- The ability to dwell for as long as necessary at a given temperatures.
- WinKratos software to allow the user to interface with the chamber for programming of environmental test cycles and control events, and for real-time acquisition and recording of data
- An optional humidity control system to give an added environment

The UHS 1400 also has:

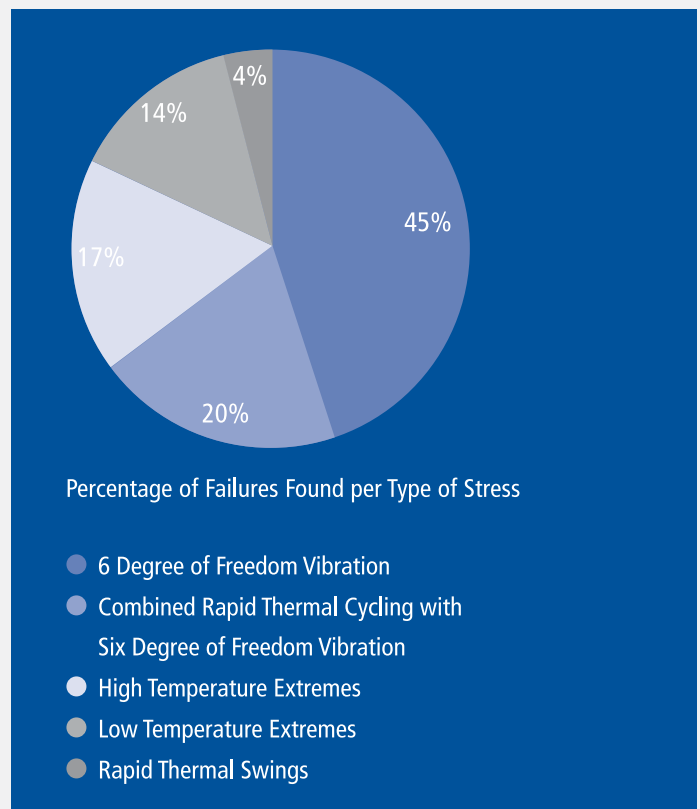
- Two full opening doors (front and rear) for ease of product loading and fixturing
- Adjustable table height giving the flexibility to be able to test larger products

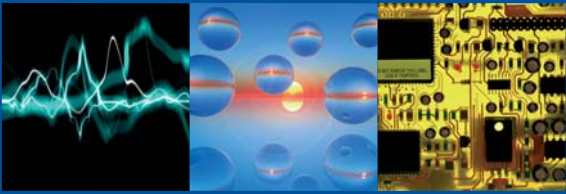
### Some of the many benefits of accelerated testing

- Fast design and process maturation
- Greatly reduced manufacturing screening costs
- Faster corrective action for design problems
- Reduced total engineering costs
- Reduced production costs
- Earlier and mature product introduction
- Higher MTBF
- Reduced warranty costs
- Happy customers

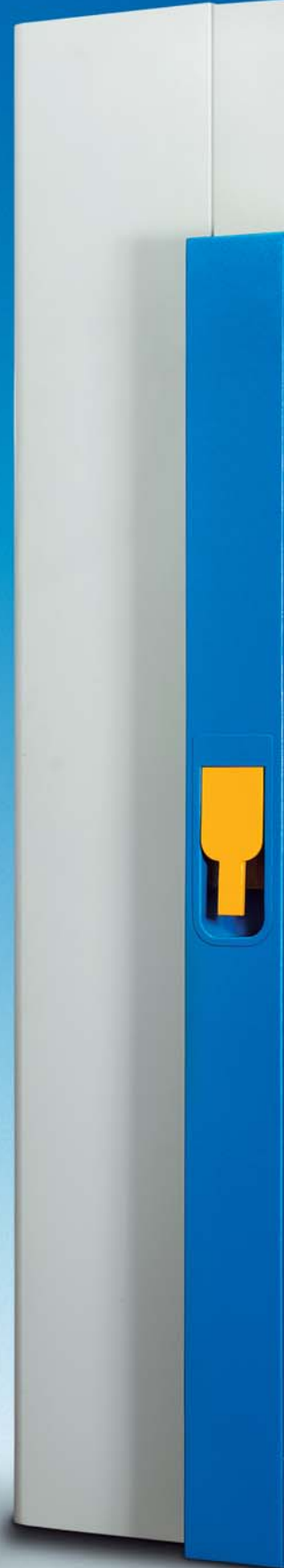
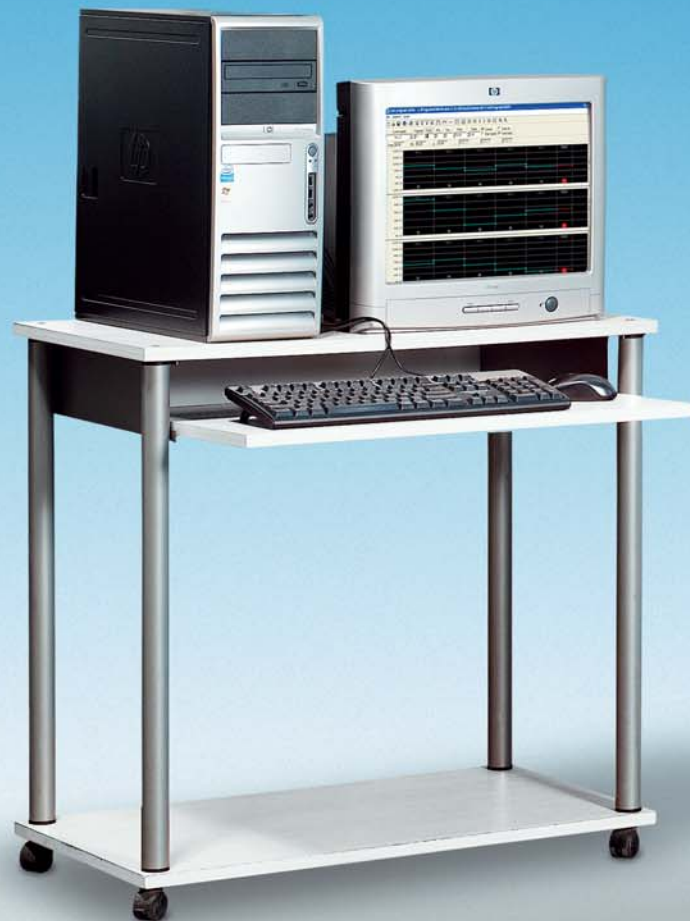
### Goal: reliability

Reliability is a key factor for product durability and for competitiveness in the global marketplace. Both the user and the manufacturer gain from higher reliability. The user has a product that does what it is supposed to when it is supposed to without failure. The manufacturer has lowered production costs and fewer product returns. Everyone wins. At Angelantoni Test Technologies, we have combined more than 80 years of experience in the design and manufacture of environmental test chambers to provide a state-of-the-art system capable of providing the user with the best performance in the reliability growth process.





UHS1400



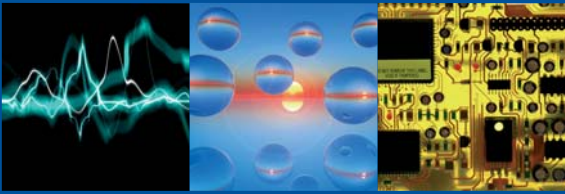
**ATT**  
AMBIENT  
TEST TECHNOLOGIES

**UHS 1400**



S





## Focus on features



### Rapid thermal cycling

The UHS temperature range is from  $-100^{\circ}\text{C}$  to  $+200^{\circ}\text{C}$ . The systems use liquid nitrogen for cooling and nichrome heaters for heating. The temperature change rate is up to  $100^{\circ}\text{C}/\text{minute}$ . The air flow is 20m/sec, giving your product a thorough conditioning.

Each UHS system has the option of being able to add humidity. The capacitance sensor has its own port, and during humidity tests is positioned near the ceiling.

### Tri-axial vibration system

Each UHS system comes complete with a tri-axial repetitive shock vibration system that allows the product to see 6 Degree of Freedom movement. There is vibration in the X, Y, Z and three rotational axes. Pneumatic vibrators are mounted beneath the table to provide the excitation.

Accelerometers are included for the X, Y and Z axes; the accelerometer tri-axial mounting block can be placed on table top (Temperature range  $-100^{\circ}\text{C}...+121^{\circ}\text{C}$ )

Vibration table performances (all performances are guaranteed at  $20...30^{\circ}\text{C}$  without any load):

- 1 Six-Degree-of-Freedom (6DoF) Vibration, non-coherent broadband vibration 5-10,000Hz
- 2 Acceleration up to 100 gRMS measured on table top on Z axis
- 3 Ceramic-Coated Vibration Table with 90% of vibration energy in 5-4000Hz for maximum energy in low frequency range.

Vibration table load capacity: 315kg

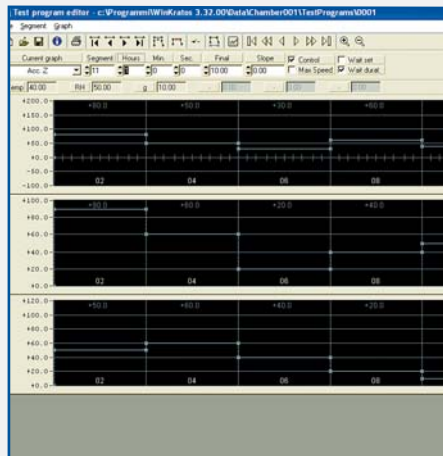
### Winkratos software

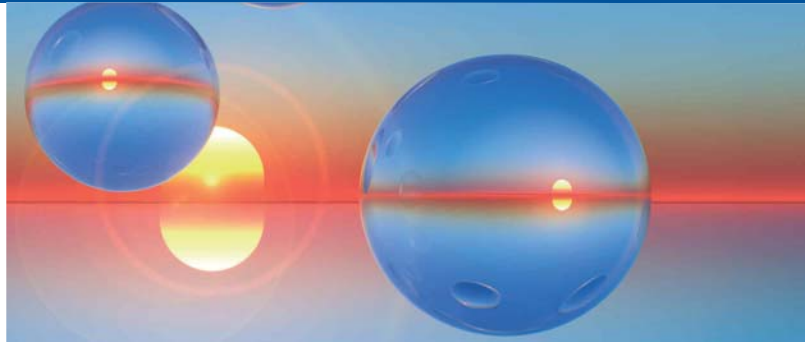
Each UHS chamber comes with a dedicated software for running the tests. This allows temperature and vibration control along with simultaneous data acquisition. (It also controls optional humidity.)

### Double full opening doors

On each side of the UHS 1400 there are single doors opening to more than  $180^{\circ}$  for easy loading, unloading and fixturing of the product(s) to be tested.

This also allows a forklift to have easy access for changing the table from one position to the other in the chamber.





## General Equipment Specification

	<b>UHS 300</b>	<b>UHS 1400</b>
Temperature Range	-100° to +200° C	-100° to +200° C
Temperature Change Rate	up to 100°C/min on air over the range -60°C/+150°C and viceversa	up to 100°C/min on air over the range -60°C/+150°C and viceversa
Vibration table size	24" x 24"	36" x 36"
Acceleration	Up to 100 gRMS	Up to 100 gRMS
Frequency Range	5 to 10,000 Hz	5 to 10,000 Hz
Pneumatic Vibrators	4	9
Internal Dimensions	760 x 760 x 500 mm	1150 x 1150 x 1030 mm
External Dimensions (W x D x H)	1550 x 1150 x 2050 mm	2200 x 1580 x 2670 mm
Heating:	40 kW by nichrome heaters	120 kW by nichrome heaters
Cooling:	Liquid nitrogen expansion	Liquid nitrogen expansion
Humidity (optional):	20% to 90% from 30° to 85° C	20% to 90% from 30° to 85° C
Noise level:	74±76 db (A) at one meter with door closed	78±80 db (A) at one meter with doors closed

Other sizes available upon request

	<b>UHS 300</b>	<b>UHS 1400</b>
Air Pressure for Vibration: (Clean and dry air)	9 bar to reach 100gRMS, about 6 bar to reach 60gRMS	9 bar to reach 100gRMS, about 6 bar to reach 60gRMS
Air Flow for Vibration:	100 Nm <sup>3</sup> /h	210 Nm <sup>3</sup> /h
Liquid Nitrogen Pressure:	6-8 bar	6-8 bar
Voltage*:	400V +6/-10% 50 Hz 3+N+G	400V +6/-10% 50 Hz 3+N+G
Amperage:	Max. 80 A	Max. 205 A

\*60 Hz upon request

### Education and Training

No matter how good a piece of equipment is, if the user doesn't understand both it and the testing principals involved it will not be truly effective. When you purchase an ACS UHS chamber, you are not just getting a piece of equipment but also intensive training by a world renowned HALT expert with almost two decades of experience in the industry. The educational process may include the following:

- Seminars
- Consulting during the order process
- Site visit to discuss set up and facilities need and to give product specific advice
- Testing training during chamber pre-acceptance testing at ACS
- Training of all related personnel on site after chamber set up and connection to facilities

**Angelantoni Test Technologies (ATT)**, a company of the Angelantoni Group, is the only company capable of offering a broad range of test solutions for a great variety of applications, thanks to the expertise and technical know-how of its worldwide teams of experts. Three leading test technology brands belong to ATT: **ACS**, world-famous since 1952 for its design and manufacture of a comprehensive range of environmental test chambers, including high-tech test equipment such as high vacuum chambers for aerospace applications and calorimeters. With the acquisition of companies in France and Germany, and new joint ventures in China and India, other brands of test chambers are now available on the worldwide market: **BIA Climatic**, **TIRA Umweltsimulation** and **ZUNDAR**.

**BIA**, providing test benches and crash test systems to major companies, mainly in the automotive and aerospace fields, since 1986. The company philosophy is to provide innovative solutions through close cooperation with the customer in order to guarantee continual improvement of product quality and performance and optimize testing costs.

**TIRA**, specialized in electrodynamic shakers, material testing equipment, and balancing systems. Internationally renowned automotive manufacturers and suppliers, manufacturers of high-speed rotating components, aviation and aerospace equipment manufacturers, research facilities and institutes, and test centres all benefit from TIRA products and services worldwide.

**Our core competencies and services for total customer satisfaction:**

- Training, both at our facility and at customer site
- Testing and quality checks
- Installation and start up
- Preventive maintenance
- Service
- Calibration using SIT certified instruments
- "Full risk" assistance contracts
- Extended warranties
- Existing chamber validation
- Retrofitting of older chambers, including instrumentation and new environmentally friendly refrigerants
- Exchange and sale of used chambers
- Research and development
- Production and assembly
- Market analysis and advice
- Special applications



ISO 14001



ISO 9001